

KATHY
KOPELLIS
MCLEOD



The respected WA dog behaviour consultant helps us understand our canine companions



Pictures: Alex Cearns, www.houndstoothstudio.com.au

food. Do not rush this stage until you have built a solid foundation. You can also introduce moving around and turning away from your dog so it works to reconnect with your face.

TRAIN AWAY FROM HOME

If all is going well at home without distractions and you've achieved duration with their attention, you can now practise eye contact in a different environment with some distractions. If your dog can't concentrate long enough, then reduce the intensity of the distractions. The goal isn't to have your dog constantly focused on you and ignoring the environment, but instead to share their attention between you and the environment.

POINTS WORTH NOTING

Before you know it, your dog will figure out that looking into your eyes earns them a reward. Be mindful to only reinforce them when you are working on the exercise or you are happy to reinforce them for this behaviour, but take notice to food reward when you choose and not every time your dog looks at you. Praise is sufficient in these situations as a substitute.

Your dog will soon learn that it's beneficial for a number of reasons to check in with you. It's not just about the food rewards that make this exercise effective, but rewards certainly help.

Properly trained, dogs are reinforced with the social contact they get with you such as verbal praise, a touch or smile. Putting it into practical use, you can have your dog give you brief attention before they interact with another dog, person or before they're let off a lead.

With so many useful purposes, including replacing rude behaviour such as barking, jumping at people and lunging to get to other dogs, this basic exercise results in many benefits. Every dog owner should teach their pets this exercise.

Kathy Kopellis McLeod

* Visit www.kathysdogtraining.com.au to check out Kathy's newly released dates for her final two Intensive Dog workshops for 2012 designed for reactive dogs. While you're there, sign up to receive Kathy's free dog training tips.

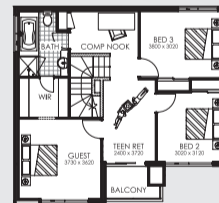
The Origin Series from \$268,357

Incomparable value. In your choice of style.

Plantation



At no extra cost, the **Origin Series** allows you to match your favourite elevation style with the floor-plan that suits your lifestyle. Call 9202 9202 or visit in-vogue.com.au



Origin
Plantation 2 -
274m² for only
\$288,999

Traditional



Architectural



**SEPTEMBER BONUS
VALUED \$5,000**

**Smeg Stainless Steel
Kitchen Package**

- 900mm Hotplate
- 900mm Oven
- 900mm Rangehood

Displays open Saturday and Sunday from 1-5pm and Monday and Wednesday from 2-5pm.

Iluka, Romano Crescent Ph: 9202 9262 all hours. **Wandi**, Bruny Meander Ph: 9202 9348. **Southern River**, Aldenham Drive Ph: 0404 032 008. **Mandurah**, Cobaki Place, Lakelands Ph: 9583 3743.

top people in two storey p 9202 9202 e sales@in-vogue.com.au | in-vogue.com.au



in-vogue
2-storey designs

6C_JIV558

HOME